

Use of SETREG

1) Use

Mainly SETREG is used to modify the following parameters:

- The version which you wish to use
- To choose the starting folder
- To give a new path (Acalib folder) for the library
- To modify the folder of work

2) Preparation

- This utility (SETREG.EXE) is present in the folder BIN.
- Create a folder on your disk C. Example C:\SETREG.
- Copy the file SETREG.EXE in this folder.
- Delete all the short cuts of ARC+ present in WINDOWS (desktop, Start menu Programmes..).
- Create a short cut for SETREG.EXE on your desktop.

3) Edition

Start SETREG.EXE, the following windows must appear.

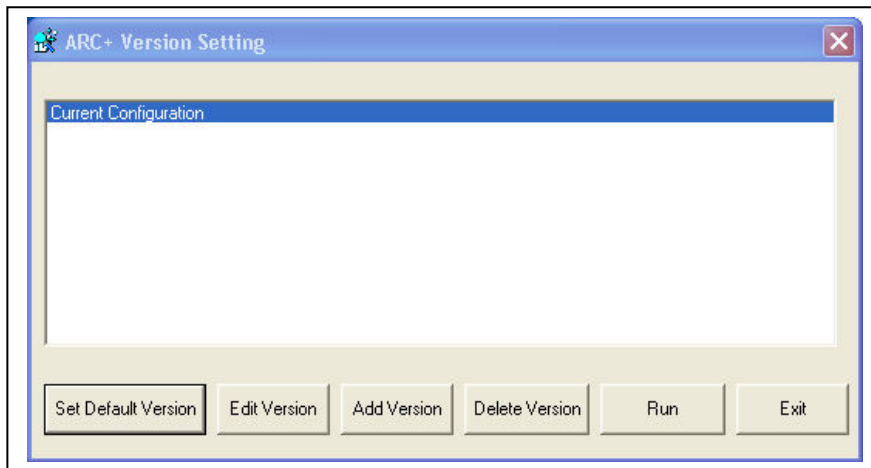


Fig. 1

By default, a version "Current Configuration" is present. This configuration corresponds to the environment of your software installed before.

If you wish to give a more explicit name for this configuration, click on the button:



Fig. 2

The following window must appear:

You can now modify the name of the version.

You can also :

To modify the folder of work

Click on this button to browse your disk and to choose a folder.

Validate the modifications

or

Cancel the modifications

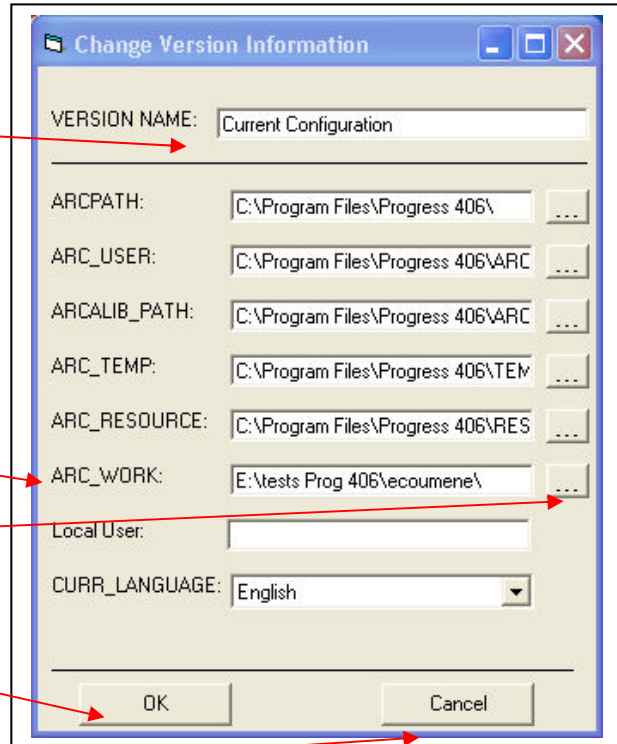
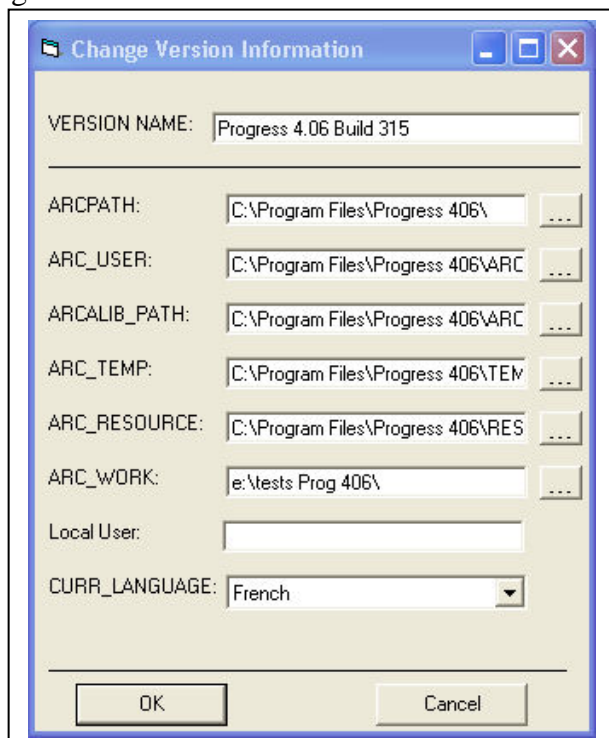


Fig.3

Here an example:
The version of ARC+ activated is:
"Progress 4.06 Build 315"

The starting folder is :
"E:\tests Prog 406"



4) Add a new version or a new starting folder

Click on button



Fig.4

The following window must appear:

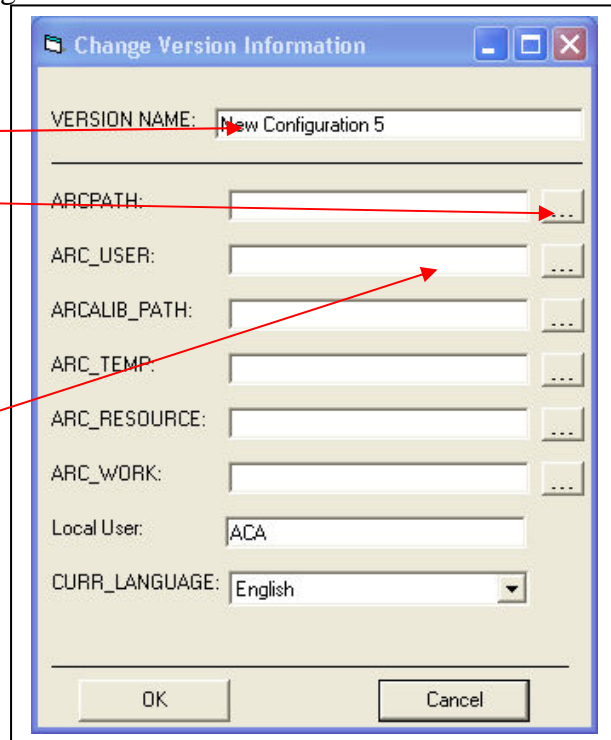
Give the name of the version or the name of a starting folder (project).

Define the folder where ARC+ is installed.

You can with the same manner, to define the other fields.

Rem :

If you click on another field all of fields are automatically completed.



Role of the variables:

If you do not know perfectly the structure of ARC+, we disadvised to you modifying the grayed fields.

VERSION NAME	Information for the user
ARCPATH	ARC+ program folder
ARC_USER	Path for ARCUSER folder
ARCALIB_PATH	Path for ARCALIB
ARC_TEMP	Path for the TEMP folder
ARC_RESOURCE	Path for ARC+ resource folder
ARC_WORK	Path for starting folder
Local User	Information for the user
CURR_LANGUAGE	Language

5) Utilisation et limitation

Do not use any more the short cuts by default of the program.

Always use SETREG to launch your software.

